



ChemScan UV-2250/NHoP Analyzer

For On-Line and Real-Time Wastewater Analysis

The ChemScan UV-2250/NHoP Analyzer provides operators with timely process chemistry measurements. The analyzer provides data to ensure proper control of nutrient, disinfection and other dissolved chemical treatment processes. This reduces the need for frequent manual sampling or laboratory analysis while producing the best water quality.

The ChemScan UV-2250/NHoP is equipped with a Graphic User Interface built to handle the challenges of a municipal/industrial environment. The display simplifies navigation making the analyzer user friendly. Large display numbers allow the operator to view the current parameter values at a glance. And maintenance and troubleshooting videos can be accessed and viewed on the display.

BENEFITS

- Assure process conformance
- Control energy and chemical costs
- Confirm plant compliance in real time
- Improve process performance
- Low reagent and maintenance costs

Advanced sample handling and conditioning accessories provide reliable operation in challenging process applications while minimizing maintenance. These include both at-process wand systems and centralized pump systems.

PARAMETERS

- Ammonia
- Phosphate

ANALYZER FEATURES

- Simple to use and maintain
- Designed for the harsh in-plant operation environment
- Reagent-assisted, multiple-wavelength UV absorbance technology ensures accuracy across varying water conditions
- Clog-proof, internal, multi-sample line manifold
- Automatic zero and cleaning eliminates electrical/optical drift and flow cell-fouling
- Benign, inexpensive reagents
- No ion-specific electrodes to clean or replace
- Multiple data communication options with plant (SCADA)

INTERFACE FEATURES

- Industrial hardened interface
- Local data visualization simplifies use
- Auto fault detection, auto recovery
- Graphic representation of system operation
- Multiple user levels, log of user changes
- Recovery to factory default setting
- Upgradeable via USB port

www.ChemScan.com

Email: info@chemscan.com
800-665-7133 (toll-free in U.S.A. and Canada)
1-262-717-9500 (U.S.A. and international)

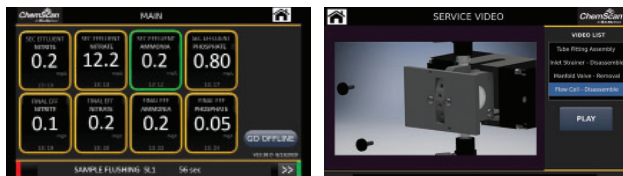


Applications:

- MUNICIPAL WASTEWATER MONITORING IN PROCESS AND EFFLUENT
- INDUSTRIAL WASTEWATER

FUNCTIONS AND OUTPUTS		PERFORMANCE SPECIFICATIONS ²	
ANALYZER OPERATION	Automated, Continuous Analysis of Water and Wastewater	READING INTERVAL	5-9999 Minutes (parameter and sample-line dependent)
MEASUREMENT PRINCIPLE	Reagent-Assisted, Multiple-Wavelength UV Absorbance Technology Using Pattern Recognition of Spectral Data	RESPONSE TIME	5-10 Minutes (parameter and sample-line dependent)
NUMBER OF PARAMETERS	Four per Sample Line	ACCURACY	Typ. 2% to 5% of Range, Parameter/Site Specific
PARAMETER OPTIONS	Ammonia (NH ₃ + NH ₄) & Phosphate	PRECISION	Less than 0.5% of Range
DATA COMMUNICATIONS	4-20 mA (2 outputs per sample line max.), Modbus RTU, Modbus TCP/IP, others optional	ZERO DRIFT	Less than 0.5% of Range
DATA LOG	Time Date, Concentration, Diagnostic Info, Calibration Spectra	STANDARD RANGE	Ammonia 0.2 - 20.0 mg/l as N Ortho Phosphate 0.05 - 5.0 mg/l as P (Higher Ranges Available)
NUMBER OF SAMPLE LINES	1 - 4 sample lines through Internal Manifold	INSTRUMENT SPECIFICATIONS	
REAGENT DETECTION	YES (Standard)	SIZE	40 x 20 x 10 inches (102 x 51 x 26 cm)
AUTO MAINTENANCE	YES (Standard)	WEIGHT	130 lbs (59 kg)
SAMPLE PARAMETERS		FINISH COATING MATERIAL	Polyurethane Enamel over Polyester Urethane on Steel (Standard) or Type 316 Stainless Steel (Optional)
SAMPLE PRESSURE	Internal pump provides sample flow with max. lift 5 ft. and max. run 20 ft. to sample location or line connection. Pressurized Sample Lines must be 10 psi maximum,	POWER	120 VAC ±10%, 50-60 Hz, 4 Amps maximum
SAMPLE FLOW	0.5 to 1.0 l/min. 1 L Flush Per Sample (0.13 to 0.26 GPM - 0.26 Gallon Flush)	POWER CONNECTION	Hard Wired (Standard) or Plug (Optional)
FILTRATION REQUIREMENT	For samples with more than 150 mg/l TSS	POWER CONDITION	Dedicated Branch Circuit Free From: Surges/Dips > 10%, RF and Switching Noise
STRAINER REQUIREMENT	#20 Mesh - Opening of 0.69 mm (0.027 inches) Provided	OPERATOR INTERFACE	7" TFT, LCD, Touch HMI Panel
SAMPLE TEMPERATURE	50-140°F (10° - 60°C)	SAMPLE CONNECTION	¼" FNPT Fitting
SAMPLE TURBIDITY	0-60 NTU	WASTE CONNECTION	¼" FNPT Fitting (Open Drain Required)
OPERATING ENVIRONMENT		MOUNTING	Wall (Standard) or Stand (Optional)
ENCLOSURE RATINGS	Upper Enclosure: NEMA 4 (NEMA 4X Optional, 316 SS) Lower Enclosure NEMA 3R (Optional, 316 SS) (shielded spill drain)	MAINTENANCE	
AMBIENT TEMPERATURE	41 - 113°F (5° - 45°C)	LIGHT SOURCE REPLACEMENT	Every 4 years
RELATIVE HUMIDITY	0 - 100% (Non-Condensing) For Installation in an Indoor or Sheltered Location	ZERO & CLEANING SOLUTIONS REFILL	As Required (4 weeks typical)
		REAGENTS REFILL	As Required (4 weeks typical)

Step by step maintenance and troubleshooting videos can be viewed on the display, simplifying the service process with graphic representation of the system's operation.



Notes:

1. Technical Specifications are subject to change without prior notice.
2. All performance specifications are based on analysis of drinking water standards under factory conditions

www.ChemScan.com

Email: info@chemscan.com

800-665-7133 (toll-free in U.S.A. and Canada)

1-262-717-9500 (U.S.A. and international)